



MONTHLY MEMBERSHIP PROGRESS REPORT

Results as of: 5/31/2015

Multiple District 7

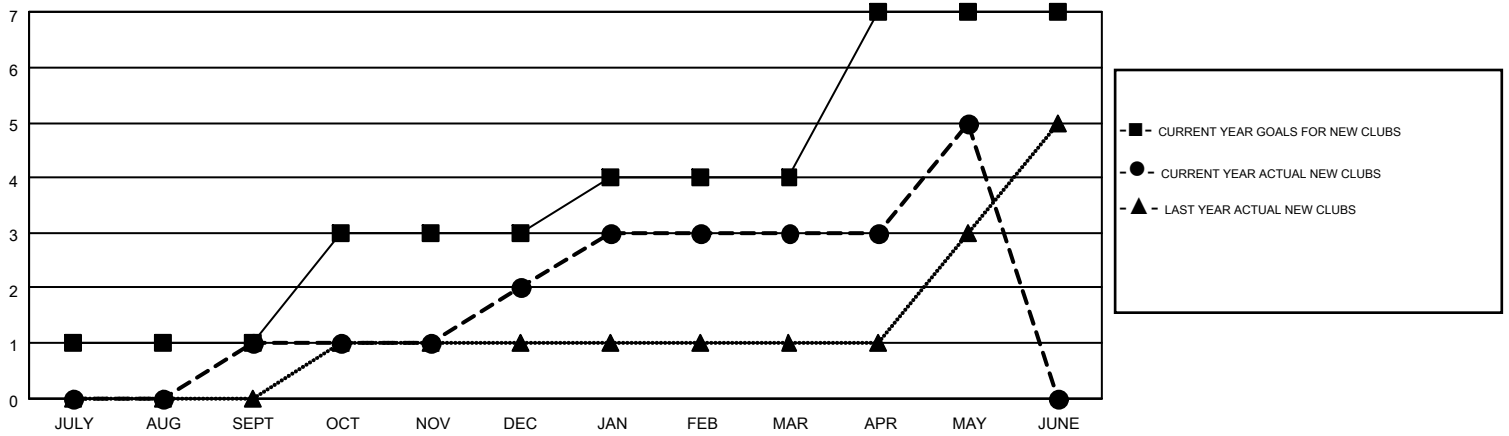
LOCATION: ARKANSAS

GMT: HAL GRIFFIN

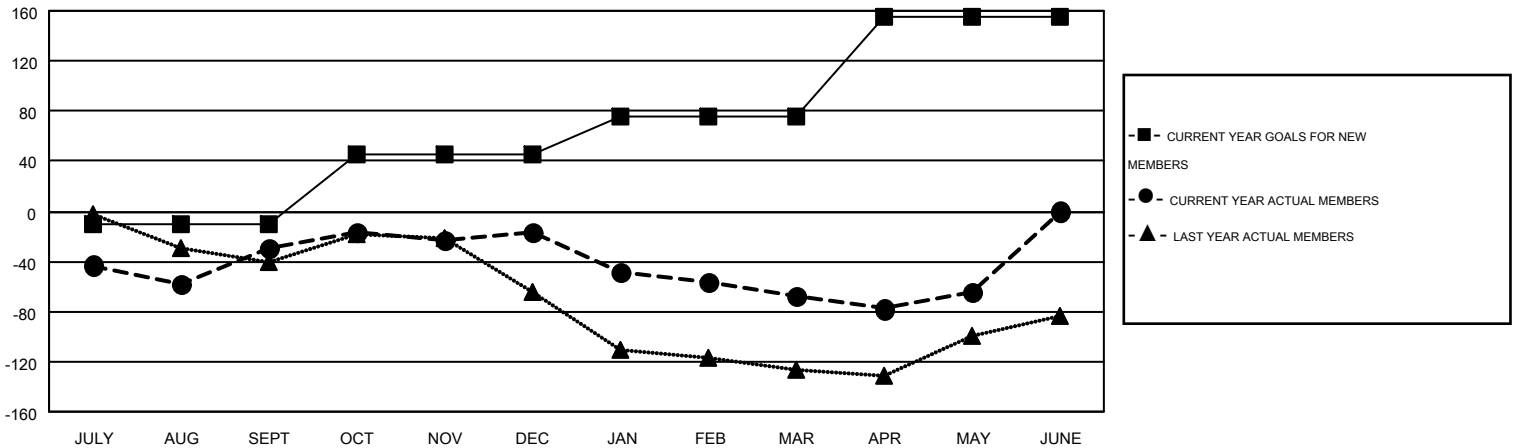
GMT CA 1

Clubs					Members				
RESULTS FOR 2014-2015					RESULTS FOR 2014-2015				
QUARTER	NEW CLUB GOAL	NEW CLUBS	DROPPED CLUBS	NET GAIN/LOSS	QUARTER	NEW MEMBER GOAL	CHARTER AND NEW MEMBERS ADDED	DROPPED MEMBERS	NET GAIN/LOSS
JULY/AUG/SEPT	1	1	6	-5	JULY/AUG/SEPT	-10	151	181	-30
OCT/NOV/DEC	2	1	0	1	OCT/NOV/DEC	55	91	78	13
JAN/FEB/MAR	1	1	2	-1	JAN/FEB/MAR	30	90	141	-51
APR/MAY/JUNE	3	2	0	2	APR/MAY/JUNE	80	106	102	4

GOALS AND ACTUAL NEW CLUBS CUMULATIVE



GOALS AND ACTUAL MEMBERS CUMULATIVE



DROPPED CLUBS: 8	98 CLUBS OF 150 ADDED 1 OR MORE NEW MEMBERS	<u>GENDER DISTRIBUTION</u>	
<u>DROPPED MEMBERS</u>		MALE	2,183 (65.30%)
DECEASED	46	FEMALE	1,160 (34.70%)
CLUB CANCELLED	17	CLICK HERE FOR HEALTH ASSESSMENT DATA	
OTHER	439	FAMILY UNIT MEMBERS	528
TOTAL	502	HEAD OF HOUSEHOLD	258
		NON-HEAD OF HOUSEHOLD	270